

—
PARKS & REC COMMUNITY FORUM

Tennis Court Park Forum

Wednesday, May 6, 2026 · 7:00 PM

Helena Township Hall · 8751 Helena Road, Alden, MI



The State of Tennis Court Park

The upper court is showing its age — cracks, ponding water, and surface failure.



Aerial view — upper level court & playground



Underutilized and degrading lower basketball court



Cracks running through court surface



Standing water after rain



Ponding & surface degradation

Items in the 5-Year Plan for Tennis Court Park

Eight specific action items the township identified for the park.



01

Expand ADA accessibility



02

Expand the pavilion



03

Eradicate invasive species



04

Develop a landscape plan



05

Improve the basketball court



06

Evaluate the concrete slab for repurposing



07

Install additional pickleball courts



08

Evaluate open space on the lower level

Three Paths Forward

From a low-cost patch to a full park reimagining — and everything in between.

OPTION A

Maintain

~\$30K

Targeted maintenance on the existing tennis / pickleball court to extend its life.

- Lowest cost
- Fastest turnaround
- Buys time, doesn't solve underlying issues

OPTION B

Rebuild

~\$144K

Full redo of the current upper-level tennis / pickleball court.

- Brand-new playing surface
- Same footprint as today
- Resets the clock for ~20 years

OPTION C

Reimagine

~\$258K

Decommission upper court, return it to green space, and build a multi-court park on the lower level.

- Up to six pickleball courts
- Refreshed basketball court
- Acoustic screening for neighbors

Vote & Comment Card

Make any comments to the Parks & Rec Board on the back, vote for your first choice, second choice, and third choice. We will report the ranking vote results as well as balanced comments from the public for each choice. Ranking your choice is not required. Anonymous is an option. If you provide your email address, you will receive the final results in your email. Results will be published on our website and social media.

OPTION A IS MY 1 / 2 / 3 CHOICE

Maintain



~\$30K

Targeted maintenance on the existing tennis / pickleball court to extend its life.

- Lowest cost
- Fastest turnaround
- Buys time, doesn't solve underlying issues

OPTION B IS MY 1 / 2 / 3 CHOICE

Rebuild



~\$144K

Full redo of the current upper-level tennis / pickleball court.

- Brand-new playing surface
- Same footprint as today
- Resets the clock for ~20 years

OPTION C IS MY 1 / 2 / 3 CHOICE

Reimagine



~\$258K

Decommission upper court, return it to green space, and build a multi-court park on the lower level.

- Up to 5 pickleball courts
- Refreshed basketball court
- Acoustic screening for neighbors

BRIEF PAUSE · QUESTIONS WELCOME

Thank you, Brian.

Take a moment for questions before we continue.

UP NEXT

Steve Dell · Maintain or Rebuild (Options A & B)

Maintain the Existing Court

Targeted repairs to address surface failure on the upper court.

MAINTAIN

\$29,900

BID FROM

Tennis Court Unlimited

Targeted maintenance to repair the existing court surface and extend its useful life.

SCOPE

What this gets you

- Surface repairs on the existing tennis / pickleball court
- Crack filling and patch work
- Re-coating and re-stripping
- Existing footprint, existing layout — no expansion

Lowest-cost option. Buys time — doesn't solve underlying surface issues.

Rebuild the Upper Court

Full demolition and rebuild of the existing tennis / pickleball court.

REBUILD

\$144,202

BID FROM

Team Elmer's

Proposal #2025-5102, signed by Eric Sanborn (Feb 17, 2026).

Excludes electrical, lighting, wind screens, and under-drains.

SCOPE OF WORK

Team Elmer's scope

- Mobilization, silt fence, soil erosion permit
- Remove asphalt over concrete tennis courts; haul off site
- Reshape sub-grade for positive drainage (1.25% grade)
- Install 6" crushed concrete gravel base
- Pave with 1.5" base + 1.5" top hot mix asphalt
- Color court surfacing & striping
- Reinstall fence, gates, sidewalk, and net posts

BRIEF PAUSE · QUESTIONS WELCOME

Thank you, Steve.

Take a moment for questions before we continue.

UP NEXT

Barry Snyder · Reimagine the Park (Option C)

Reimagine the Park

Decommission the upper court, expand green space, and build a true multi-court facility below.



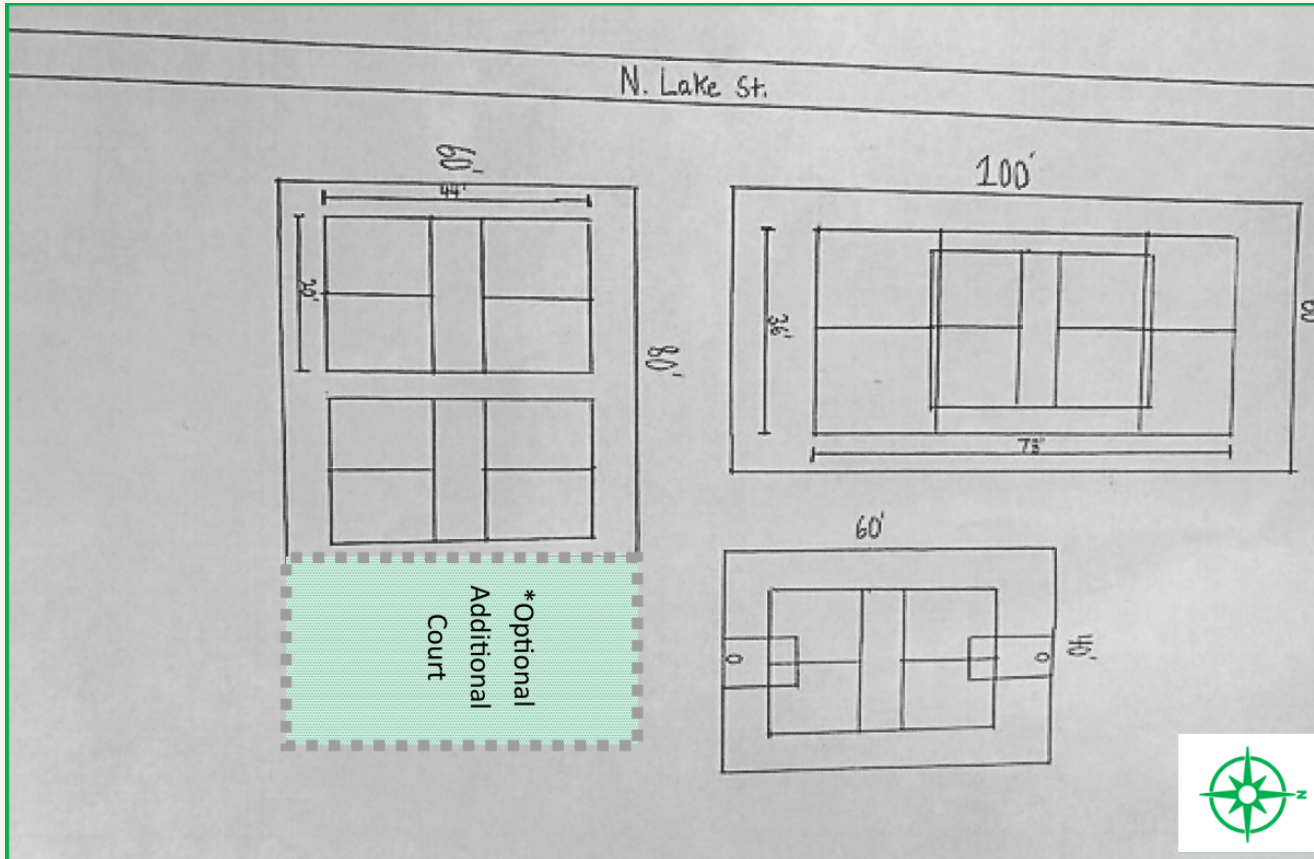
Current State of Park



AI Rendering of Reimagined Park

Reimagine the Park

Decommission the upper court, expand green space, and build a true multi-court facility below.



PROPOSED LOWER-LEVEL LAYOUT

- Decommission upper court → expand green space and entertainment area
- Build a multi-court park on the lower level
- Up to 4 pickleball courts plus one tennis and basketball-dual purpose court
- Acoustic screening designed with neighbors in mind
- Built to withstand harsh Michigan weather

ESTIMATED TOTAL INVESTMENT

~\$258,250

Demolition + new build (full breakdown ahead)

Total Investment — Option C

Full transparency of where the money goes

STEP 1 · DEMOLITION

Active Excavating

Rip up existing tennis court & fencing, strip gravel, haul in 140 yds topsoil, seed

\$12,650

STEP 2 · NEW BUILD

Schwannecke Sport Courts

Two new slabs, surfacing on existing slab, fencing, nets, sound barrier

\$245,600

OPTIONAL · EXPANSION

Schwannecke Sport Courts

Expand 80x60 slab to 90x60 — adds a fifth pickleball court

+ \$10,800

PROJECT TOTAL

Base Plan

\$258,250

With Optional Expansion (+\$10,800)

\$269,050

Funding plan to be developed.

Schwannecke Sport Courts — Estimate Detail

Estimate #2601-2016-1292 dated Jan 28, 2026 — full scope across three court surfaces.

BASE BID

\$245,600

VENDOR

Schwannecke Sport Courts

Tobin Schwannecke

(231) 715-0272 · schwanneckesportcourts.com



New 60×100 slab

Sub-base, 4" fibermesh concrete, color surfacing, line/stripe tennis + pickleball



New 80×60 slab

Sub-base, 4" fibermesh concrete, color surfacing, line/stripe 2 pickleball courts



Existing 40×60 slab

Power clean, acrylic resurfacer, 2 coats primary + 2 coats secondary, basketball/pickleball striping



Fence + nets + sound barrier

10' galvanized chain-link, gates, Premier Douglass posts/nets, acoustic barrier

Sound Barrier — NoiseGard™ DVB

Acoustic barrier panels designed into the build to reduce pickleball noise reaching adjacent properties.



Putterman Athletics · NoiseGard™ DVB Acoustic Barrier System

UP TO

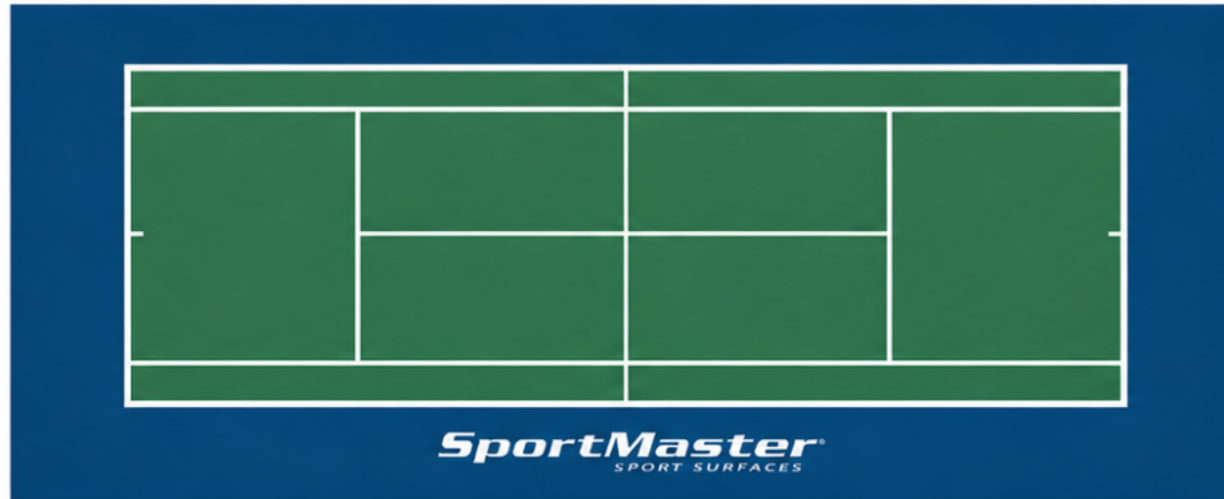
13 dB

Pass-through reduction (STC) — perceived loudness roughly halved

FEATURES

- 40 oz polyester-reinforced vinyl fabric
- Tailored to fit the fence with top, side, bottom closures
- Anti-microbial, anti-fungal, UV-inhibited for outdoor use
- Available in a wide range of colors
- 0.8 mm thick, 20' wide panels

Court Color Selection



COURT

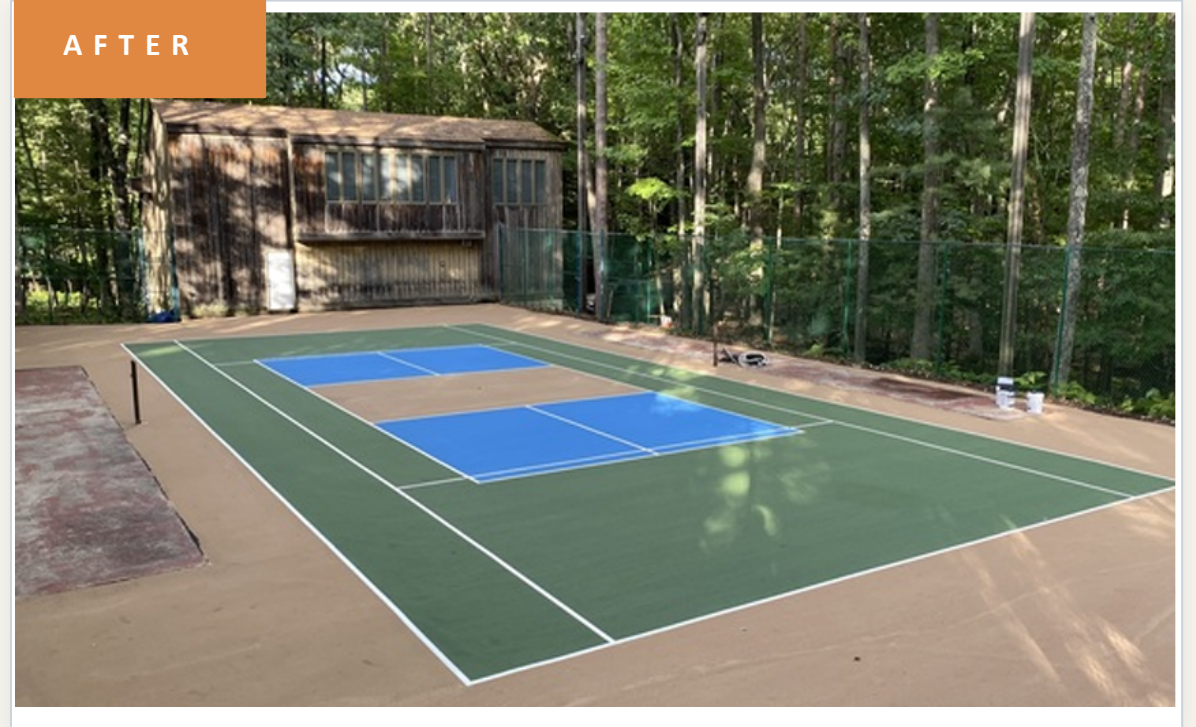


BORDER



Greens and earth tones recommended to blend with the surrounding woods.

Example: Schannakke (Vendor) Work



What the lower level could become



Conceptual rendering — multi-court park with tennis, pickleball, basketball, and seating

BRIEF PAUSE · QUESTIONS WELCOME

Thank you, Barry.

Take a moment for questions before we continue.

UP NEXT

Open discussion · Questions, comments, and ideas

YOUR TURN

Questions, Comments, Ideas?

Pick up a comment card on your way out — every voice on this matters.

A) Maintain (~30k)

- Targeted maintenance of existing pickleball court

B) Rebuild (~144k)

- Full redo of the upper level pickleball court

C) Reimagine (~\$258 – 270k)

- Decommission upper court (return to green space), build multi-court park on lower level